



# LITHUANIAN AIRPORTS ENJOY AN INCREASE IN THE PASSENGER AND FLIGHT NUMBERS IN THE FIRST QUARTER OF 2018

News / Airports / Routes



**Following a consistent increase in the passenger and flight numbers throughout the recent years, Lithuanian Airports are continuing the trend this year. In the first quarter of 2018, all three Lithuanian Airports served 8% more flights and 16% more passengers compared to last year's numbers. Such optimistic results suggest that by the end of the year the number of passengers served will get close to 6 million.**

**According to Director of Lithuanian Airports Marius Gelzinis, during the first quarter, growth was observed in the majority of areas including the number of flights, passengers and destinations.**

**“The most impressive growth in the number of passengers was observed at Vilnius Airport, where it reached 17% and passenger flow surpassed 977,000. Kaunas Airport was close behind reaching a 16% growth in the same category while passenger flow in Palanga Airport remained very similar compared to the year before”, says M. Gelzinis. He added that in the first quarter of 2018, Lithuanian Airports served 1.2 million passengers, which represents a 16% growth compared to last year’s numbers.**

**If the numbers continue to grow as rapidly as they do, M. Gelzinis believes that by the end of the year Lithuanian Airports will have broken a new record by serving almost 6 million passengers.**

In the first quarter of 2018, Vilnius Airport also enjoyed the fastest growth in the number of flights served. The numbers here increased by a tenth while in Kaunas they rose by 1%. Overall, in the period between January and March, Lithuanian Airports saw an increase of 8% in flight numbers bringing their total to 13,000.

“Good results were influenced by the rising variety of regular flights. We are happy to offer 86 destinations from all three – Vilnius, Kaunas and Palanga – airports. Summer flight season opened at the end of March offering passengers exciting new opportunities. Vilnius Airport now operates flights to Athens and the Island of Corfu, while Kaunas Airport offers flights to Girona, Burgas and Rimini”, - says Director of Lithuanian Airports.

Although Lithuanian Airports keep on expanding their route map, the most popular destinations remain the same. In the first quarter of 2018, 19% of passengers in all three Lithuanian airports travelled to the United Kingdom, 10% - to Germany and 8% - to Norway.

London Luton Airport remains the most popular airport among passengers travelling from Vilnius, Kaunas and Palanga with 11% of passengers choosing this destination. Other popular choices include Copenhagen and Warsaw with 6% each.

It was established that more than a half of all Lithuanian Airports passengers flew with Ryanair and Wizz Air airlines in the first quarter of 2018. The remaining passengers chose airBaltic, LOT, Scandinavian Airlines, Ukraine International Airlines and other air carries.

## **About Lithuanian Airports**

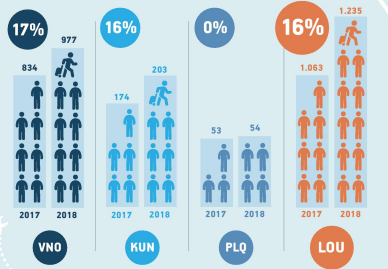
The network of Lithuanian Airports manages three air gates in Vilnius, Kaunas, and Palanga. In 2017, they served 5.2 million passengers and 55 thousand flights. During the summer season, 17 airlines fly from Lithuanian Airports in 79 directions to 67 cities in 29 countries. Based on data of the Airports Council International (ACI Europe), Lithuanian Airports contribute to the Lithuania's GDP by 2.5 percent.

# LOU 2018 Q1 AVIATION STATISTICS OVERVIEW

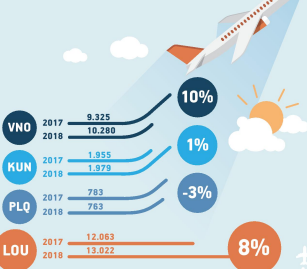
# LITHUANIAN AIRPORTS

VNO KUN PLQ

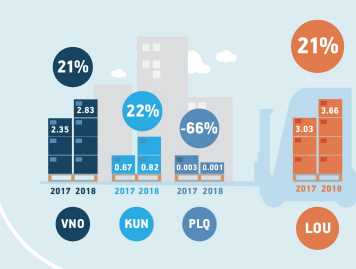
## PASSENGERS, K



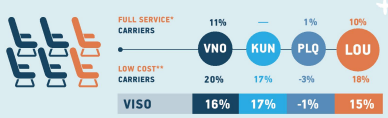
## FLIGHTS



## CARGO, KT



## CHANGE IN SEATS OFFERED



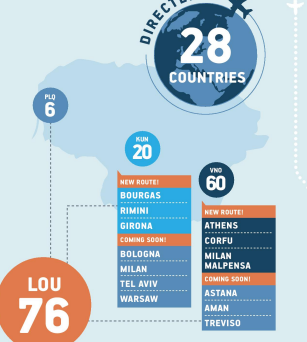
\* Airlines operating scheduled flights excluding low-cost carriers  
\*\* Ryanair, Wizz Air, Norwegian Air Shuttle

## AVERAGE LOAD FACTOR



\* Airlines operating scheduled flights excluding low-cost carriers  
\*\* Ryanair, Wizz Air, Norwegian Air Shuttle

## NUMBER OF ROUTES



## TOP 10 COUNTRIES BY PASSENGERS

COUNTRY	SHARE
1. UNITED KINGDOM	11%
2. GERMANY	10%
3. NORWAY	8%
4. DENMARK	7%
5. POLAND	7%
6. ITALY	6%
7. LITHUANIA	5%
8. UKRAINE	5%
9. RUSSIA	4%
10. SWEDEN	3%

## TOP 10 DESTINATIONS BY PASSENGERS

DESTINATION	SHARE
1. Gdansk	11%
2. Katowice	10%
3. Poznan	8%
4. Warszawa	7%
5. Lodz	7%
6. Krakow	6%
7. Vilnius	5%
8. Riga	5%
9. Tallinn	4%
10. Stockholm	3%

## TOP 10 AIRLINES BY PASSENGERS

AIRLINE	SHARE
1. RYANAIR	30%
2. WIZZ AIR	26%
3. AIR BALTIC	10%
4. LOT POLISH AIRLINES	6%
5. SCANDINAVIAN AIRLINES	6%
6. UKRAINE INTERNATIONAL AIRLINES	4%
7. LUFTHANSA	4%
8. AEROFLOT	4%
9. FINNAIR	2%
10. NORWEGIAN AIR SHUTTLE	2%

06 MAY 2018

### ARTICLE LINK:

<https://to.50skyshades.com/news/airports-routes/lithuanian-airports-enjoy-an-increase-in-the-passenger-and-flight-numbers-in-the-first-quarter-of-2018>